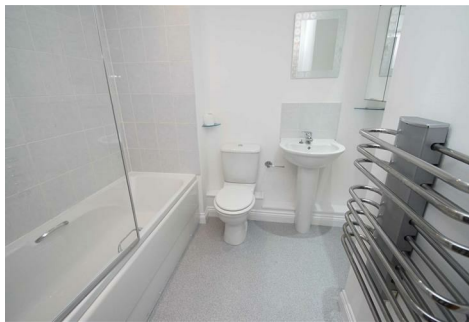




Stoneacre
Properties

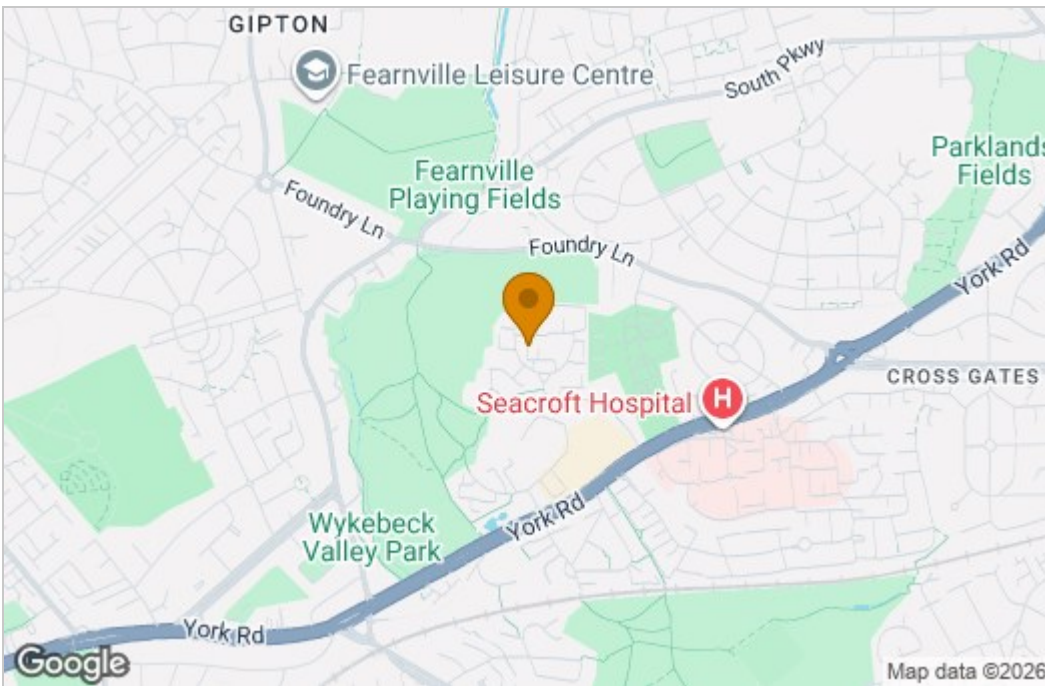


Ash Court, Leeds, LS14 6GH
£900 Per Calendar Month

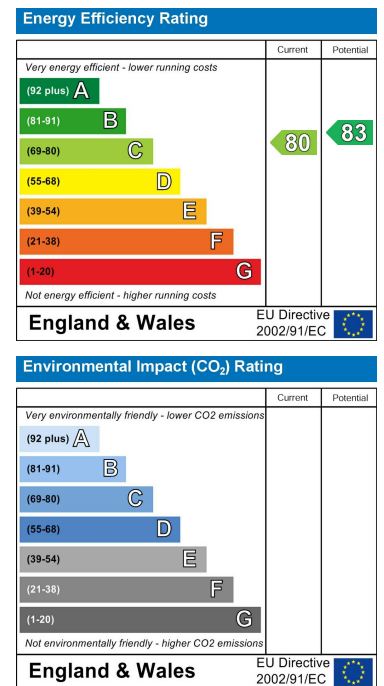
Stoneacre Properties are delighted to offer to let a well presented ground floor apartment, two bedroom, within the recently constructed and sought after York Dale development which is close to all local amenities as well as offering reasonable access into Leeds City centre. This bright and airy apartment features a delightful reception room with a luxury open plan fitted kitchen and space for dining, Two double bedrooms and a separate main bathroom. The property is finished to a high, modern standard. Other features include an allocated parking space and well maintained communal areas. AVAILABLE Mid JUNE!

Floor Plan

Area Map



Energy Efficiency Graph



These particulars, whilst believed to be accurate are set out as a general outline only for guidance and do not constitute any part of an offer or contract. Intending purchasers should not rely on them as statements of representation of fact, but must satisfy themselves by inspection or otherwise as to their accuracy. No person in this firm's employment has the authority to make or give any representation or warranty in respect of the property.

184 Harrogate Road, Leeds, West Yorkshire, LS7 4NZ
 Tel: 0113 237 0999 Email: north@stoneacreproperties.co.uk <https://www.stoneacreproperties.co.uk>

View properties before they come on the market by following us on Instagram - @stoneacreproperties

